

A modern multi-story apartment building at night, featuring large glass windows and balconies. The building is illuminated from within, showing interior lights and furniture. The sky is dark blue.

# MTD KITCHEN

# MULTI UNIT PORTFOLIO

We are a Kitchen Design Firm.  
We manufacture our products in our own factory in Southern California using our state of the art semi-automation machinery to avoid human error, increase productivity, and keep that perfect machine precision on each part we cut for your kitchen.

## Contact Us

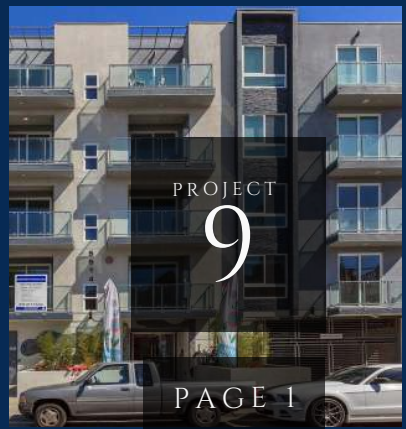
(818)764-2254

[bids@mtdkitchen.com](mailto:bids@mtdkitchen.com)

[www.mtdkitchen.com](http://www.mtdkitchen.com)



# TABLE OF CONTENTS





PROJECT  
1



3060 OLYMPIC - 226 UNITS

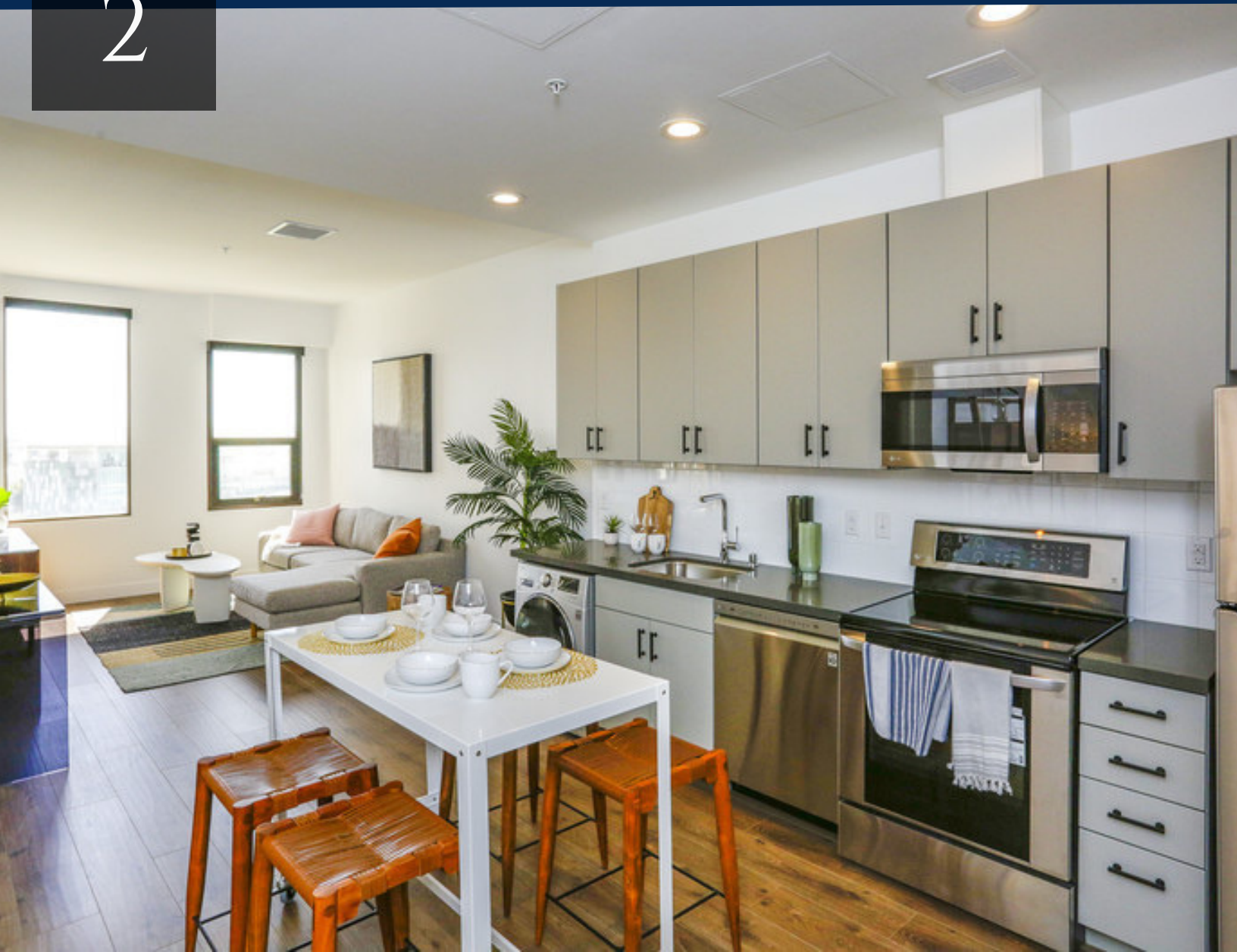




PROJECT

2

# 3345 WILSHIRE - 202 UNITS





PROJECT  
3



## 700 MANHATTAN - 160 UNITS





PROJECT  
4



137 S WILSON - 30 UNITS





PROJECT  
4



137 S WILSON

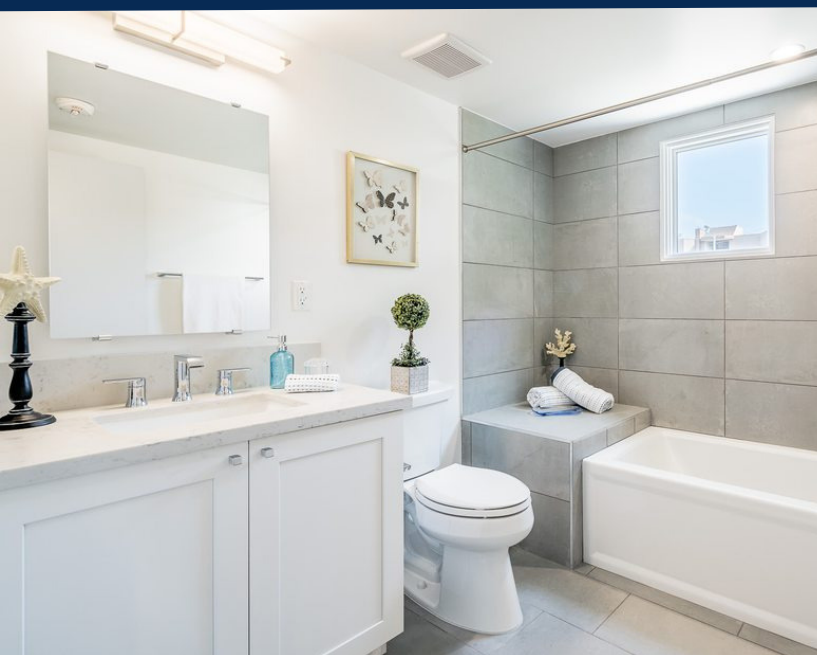




PROJECT  
4



137 S WILSON

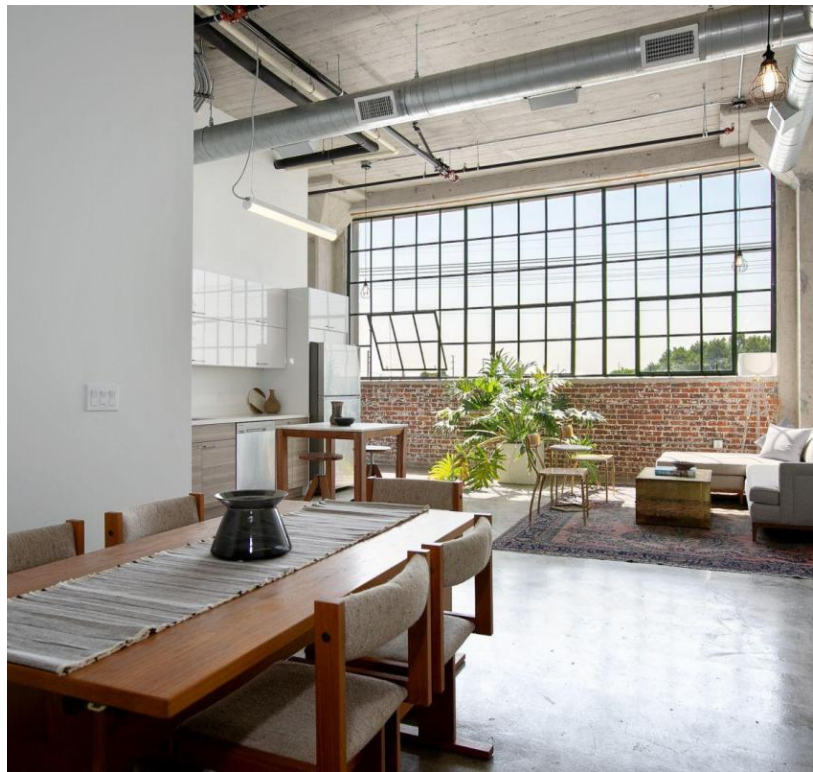
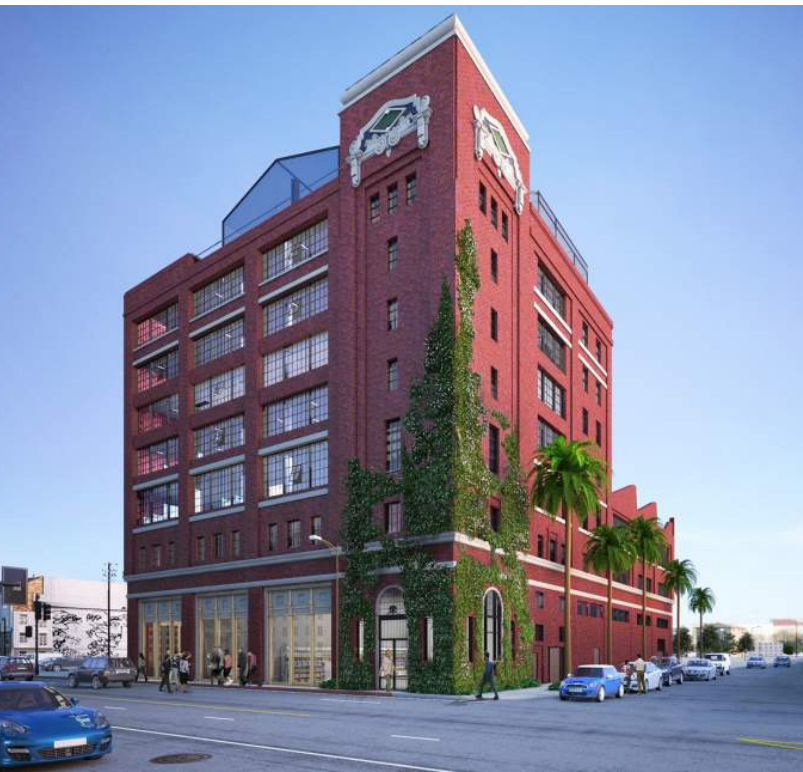




# 1745 EAST 7TH ST - 57 UNITS

PROJECT

5





PROJECT  
5



733 GRAMERCY PL. - 11 UNITS





PROJECT

5



733 GRAMERCY PL.





PROJECT

6



1025 BERENDO - 48 UNITS





PROJECT

6



1025 BERENDO

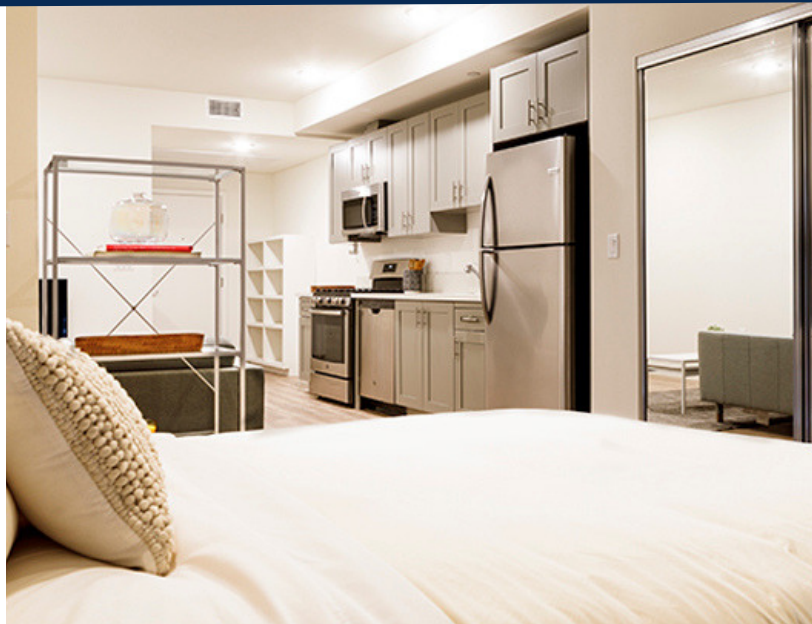




PROJECT  
6



1025 BERENDO

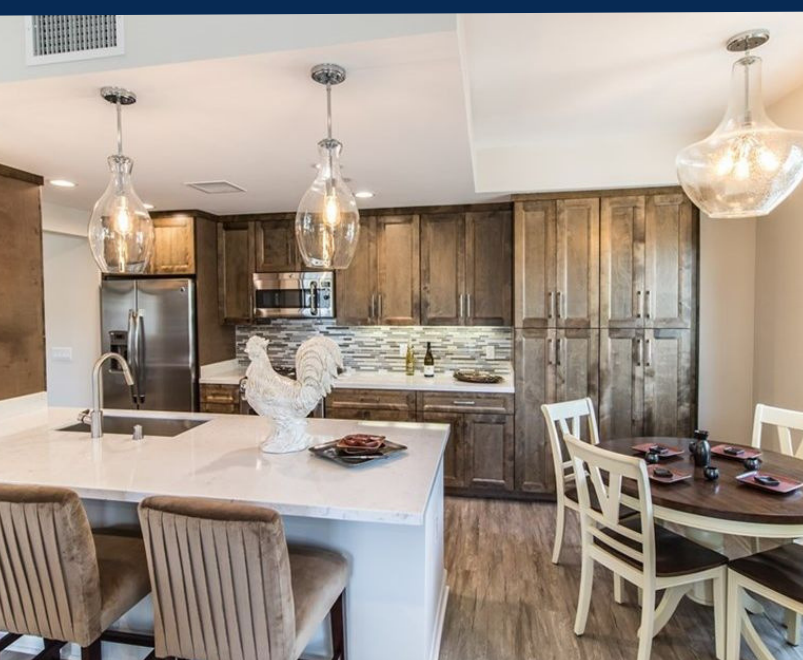




PROJECT  
7



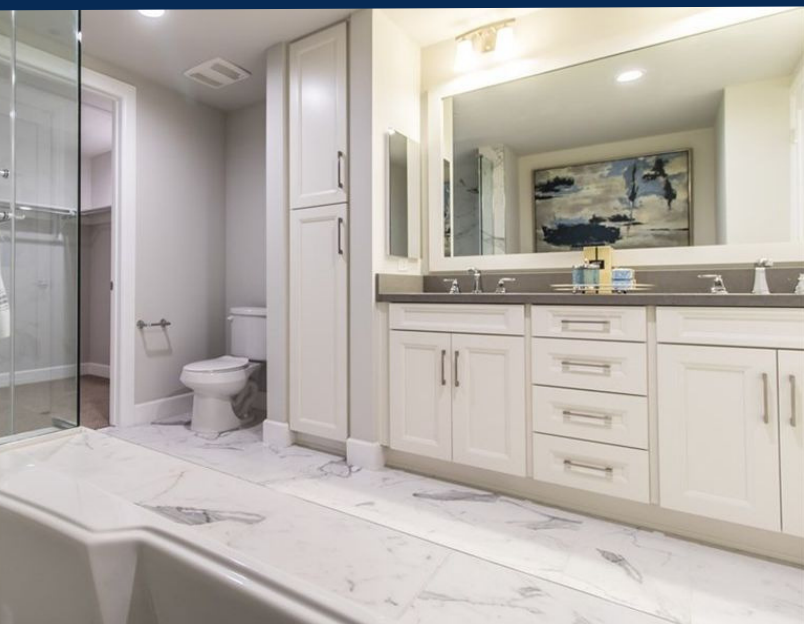
5015 BALBOA VILLAS - 53 UNITS







## 5015 BALBOA VILLAS





PROJECT  
8



2000 N LAKE ST - 9 UNITS





PROJECT  
8



2000 N LAKE ST - 9 UNITS





PROJECT  
9



5514 BONNER - 34 UNITS





PROJECT  
10



11055 CUMPSTON - 80 UNITS



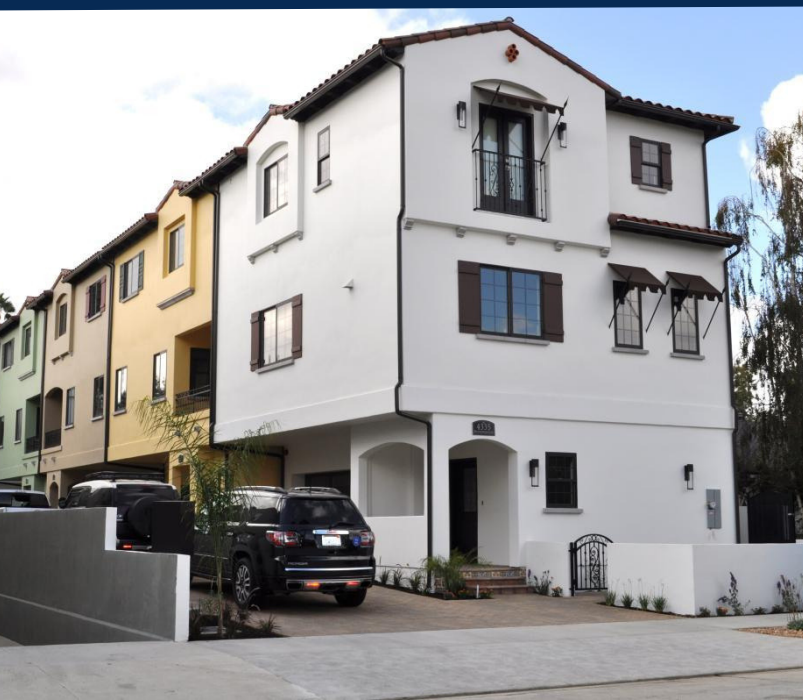


PROJECT

11



## 12916 BLOOMFIELD - 6 TOWNHOMES





PROJECT  
12



THE GARMENT LOFTS - 180 UNITS





PROJECT  
12



THE GARMENT LOFTS







## 4411 LEMP - 5 TOWNHOMES







## 430 BROADWAY LOFTS - 150 UNITS





# UNDER CONSTRUCTION





WE DESIGN,  
MANUFACTURE,  
& INSTALL



CUSTOM  
KITCHEN  
CABINETS

AMERICAN  
MADE





# BUILT FOR SUCCESS

**Our teams consist of the most reliable, skilled, and experienced kitchens designers and cabinet installers.**



## DESIGNERS

With your budget and aesthetics in mind, our designers verify each unit's layout to be ADA compliant and free of any architectural oversights before creating shop drawing from your original blue prints. Their field experience serves as a sounding board design solutions and ideas if needed. With quick turnaround times we'll never hold your project up.

- **Designers are equipped with all ADA compliances**
- **Designers will verify each unit for proper efficiency and with your budget in mind**
- **Designers will account for any field adjustment and give suggestions to solve any issue.**



## LARGE INSTALL CREWS

Our installers arrive to your site with a minimum of 10+ years cabinetry experience. We're able to match your contractor's pace, placing up to 30 installers to a single job for fast and accurate installation. We equip each team with top of the line tools and training to ensure a timely and flawless install in every unit, every time.

- **Each installer is equipped with top of the line tools, and skilled with over 10+ years minimum**
- **All installers go through our rigorous "skill" training process ensuring a perfect install on every unit every time.**



## FIELD SUPERVISORS

On site daily, our Field Supervisors are your eyes and ears. Using our software, they keep you updated on your project and provide the transparency and accountability necessary to feel confident in our team. They keep crews on schedule, maintain quality control, and address any on-site issues for fast and simple resolutions.

- **Field Supervisors will be on site daily ensuring all crews are on schedule, as well as quality control**
- **Field Supervisors can address any issues on site for quick solutions.. and adjust to builders.**



## PROJECT MANAGERS

When a project manager is assigned to your project they are responsible for the efficiency of your project. They are veterans in their field, and serve as your direct MTD contact.

- **Our veteran project managers are here to ensure your starts and ends on schedule.**
- **Project managers are your direct and their sole purpose is to serve you.**



THERE'S NOTHING MORE IMPORTANT THAN MANUFACTURING WITH THE BEST QUALITY MATERIALS.



We've partnered with world renowned brands to bring you high quality, building products including architectural grade plywood, wood veneers, laminates, acrylics, and composites.



## PRODUCTS WE OFFER

- Custom Kitchen Cabinets
- Pre-fab Cabinets
- Countertops
- Custom Closets
- Bathroom Cabinets
- Garage Cabinets
- Laundry Rooms
- Recreational Rooms

SHINNOKI®  
prefinished wood panels

**TAFISA**

**E EGGER**  
MORE FROM WOOD.

**VIVA**

**CLEAF**

**BRAVA**

**SALICE**

**FERIA**



# MTD'S DREAM TEAM



**SEND US YOUR  
ARCHITECTURAL  
PLANS FOR A FREE  
QUOTE**



818-764-2254



[WWW.MTDKITCHEN.COM](http://WWW.MTDKITCHEN.COM)



[INFO@MTDKITCHEN.COM](mailto:INFO@MTDKITCHEN.COM)

## 226 UNITS LOCATIONS

**LOS ANGELES SHOWROOM**  
13213 SHERMAN WAY  
NORTH HOLLYWOOD, CA 91605

**ORANGE COUNTY SHOWROOM**  
1201 E BALL. RD. UNIT W  
ANAHEIM, CA 92805

**MTD FACTORY**  
7453 DEERING AVE.  
CANOGA PARK, CA 91303